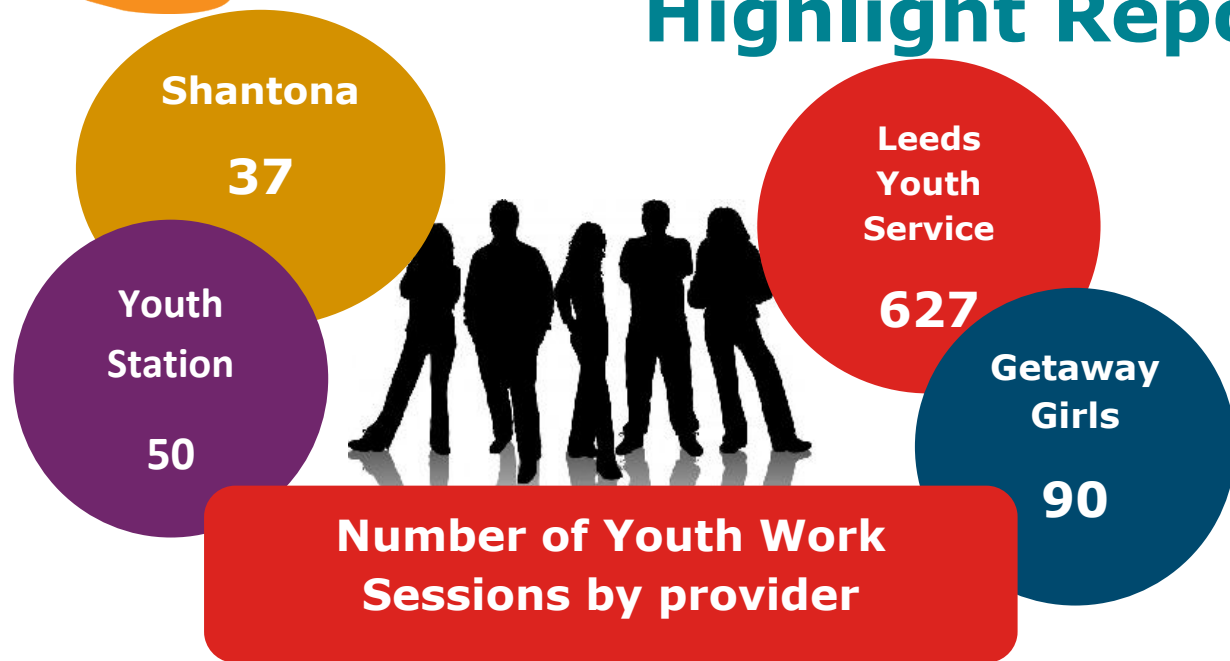
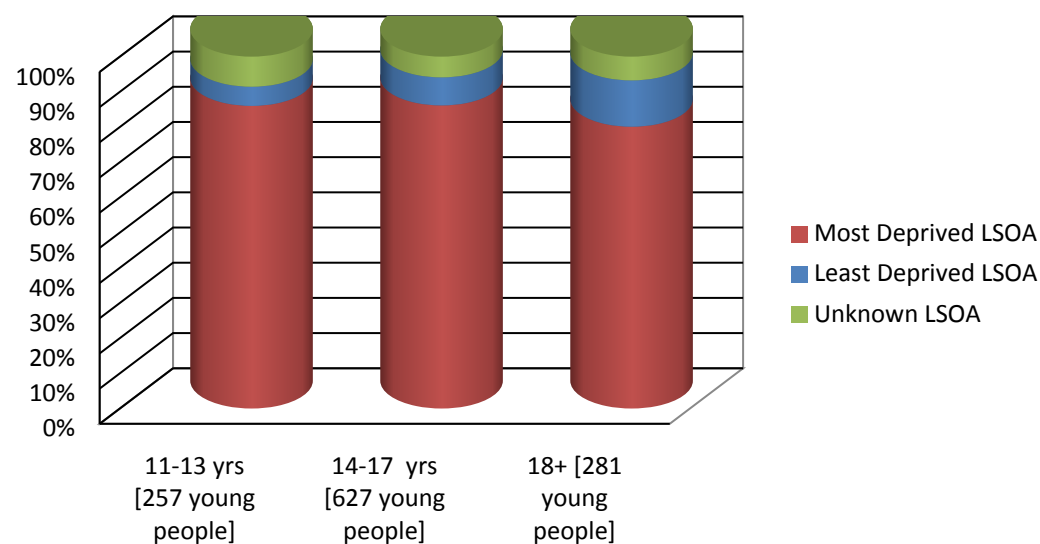


Geographically Targeted Youth Work –Inner East Highlight Report 1st April – 30th September 2015



Sessions Attendance by LSOA



Sessions by Priorities.

🔥 Support children to live in safe & supportive families	19
🔥 Ensure that the most vulnerable are protected	96
🔥 Improve behaviour, attendance & achievement	140
🔥 Increase levels of young people in employment, education or training	4
🔥 Support children to be ready for learning	7
🔥 Improve support where there are additional health needs	5
🔥 Encourage activity & healthy eating	125
🔥 Promote sexual health	35
🔥 Minimise the misuse of drugs, alcohol & tobacco by children&young people	17
🔥 Reduce youth crime & anti-social behaviour	213
🔥 Increase participation, voice & influence	133
🔥 No Priority Recorded	10

TOTAL NUMBER OF DIFFERENT YOUNG PEOPLE ATTENDING YOUTH WORK PROVISION IN EACH OF THE WARDS

KILLINGBECK & SEACROFT
461

BURMANTOFTS & RICHMOND HILL
300

GIPTON & HAREHILLS
442